

REFERENCES

VIBRATION-FREE SOLDIER BEAM SHEETING SYSTEMS

To eliminate impact noise and vibration damage to adjacent structures, soldier beams are installed by rotating a continuous flight hollow shaft auger into the ground for the full depth of the soldier beam. While the auger is advancing into the ground, the flights of the auger are filled with soil, providing lateral support and maintaining the stability of the hole. A self-hardening slurry is injected through the auger shaft as the auger is being withdrawn, maintaining continuous support of the hole. The soldier pile is lowered into the slurry-filled hole.

5/1/2010 **Winthrop University Hospital**
 Linac Addition
 \$121,490
 Phoenix Medical Construction
 516/693-0500

1/1/2010 **Bay Park STP Improvements**
 Bay Park WPCP
 \$326,825
 Mace Contracting Corp.
 914/576-0606

8/24/2009 **Roosevelt Library**
 Roosevelt, N.Y.
 \$143,000
 Capobianco Inc.
 631/207-0200

9/15/2008 **Brookhaven National Laboratory**
 Building #515
 \$195,000
 Rockmore Contracting Corp.
 631/366-6200

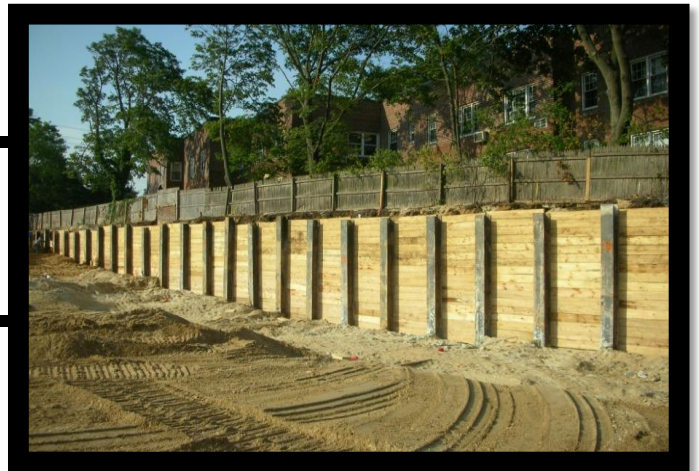
6/23/2008 **The Regency**
 Lawrence, N.Y.
 \$166,500
 LJB Sewer & Drainage Corp.
 631/589-0800

4/1/2007 **154-08 Northern Blvd.**
 Flushing, N.Y.
 \$575,500
 154-08 Northern Blvd. LLC
 718/353-2345

6/1/2008 **402 Avenue U**
 Brooklyn, N.Y.
 \$810,000
 Kiska Group Ltd.
 718/290-9111

10/1/2008 **NYU Cogen Vault Project**
 3rd Street & Mercer Street, N.Y.C.
 \$1,822,160
 Peter Scalamandre & Sons
 516/868-3000

10/1/2008 **Research Building Expansion**
 North Shore University Hospital
 \$465,000
 Barr & Barr, Inc.
 212/563-2330



REFERENCES

VIBRATION-FREE SOLDIER BEAM SHEETING SYSTEMS

To eliminate impact noise and vibration damage to adjacent structures, soldier beams are installed by rotating a continuous flight hollow shaft auger into the ground for the full depth of the soldier beam. While the auger is advancing into the ground, the flights of the auger are filled with soil, providing lateral support and maintaining the stability of the hole. A self-hardening slurry is injected through the auger shaft as the auger is being withdrawn, maintaining continuous support of the hole. The soldier pile is lowered into the slurry-filled hole.

11/1/2007 **NY Hospital**
 Flushing, Queens
 \$2,340,700
 Bove Industries
 631/331-8500

2/1/2005 **St. Francis Hospital Parking Garage**
 Roslyn, N.Y.
 \$2,230,000
 Peter Scalamandre & Sons
 516/868-3000

4/1/2004 **St. Nicholas Greek Church**
 Bayside, Queens
 \$538,900
 Pav-Lak Contracting, Inc.
 631/434-7300

6/1/2002 **MTA Euclid Ave. Station**
 Brooklyn, N.Y.
 \$110,263
 Gibraltar Waterproofing
 718/585-8800

4/1/2004 **MTA Essex Street Plant Rehab**
 Essex & Christie St., NYC
 \$188,000
 A.F.C. Enterprises, Ltd.
 718/275-1100

8/1/2002 **Elwood School District**
 Northport, N.Y.
 \$56,000
 Ferran Development
 631-249-4975

4/1/2001 **P.S. 222**
 Jackson Heights, Queens
 \$237,300
 J.M.S.A. Engineering, P.C.
 516/827-1134

10/1/2001 **Boy's Club of NY**
 41st. Road, Flushing, N.Y.
 \$260,000
 MBI
 212/376-4400

12/1/2000 **939 Union Street**
 Brooklyn, N.Y.
 \$307,400
 Extreme Concrete Corp.
 631/585-9000

